

## 中高壓管路過濾器 Medium - High Pressure Filters

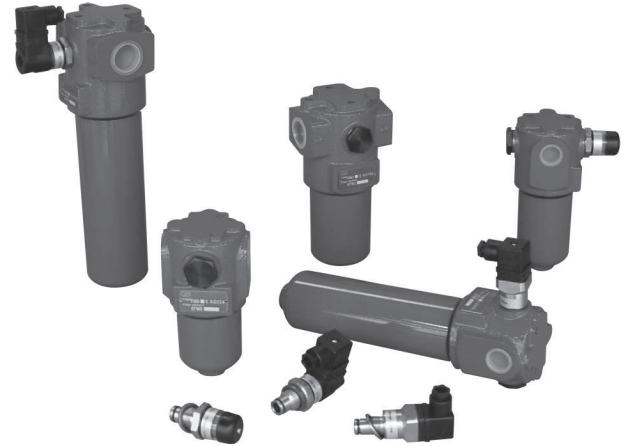
FM系列過濾器適用於中等壓力的液壓壓力管路安裝。濾蕊則採用進口玻璃纖維濾材，具有過濾精度高，過油能力，納污量大等優點。FM系列過濾器可配置全系列的目視或電氣污染指示器。FM系列特別適用於車輛、油壓機械、農業機械等。

FM series filters are designed for pressure line applications and suitable for in-line installation. Inorganic microfiber is available with a high efficiency and a large capacity of filtrate. A complete line of pressure differential visual and electrical indicators are available with this series of filters.

FM series are specifically designed for mobile, agricultural and industrial applications.

### 特點：

- 1.高過濾精度，納污量大。
- 2.本體經防鏽處理。
- 3.不鏽鋼濾蕊可清洗。
- 4.污染指示器可依現場需求做兩側安裝。
- 5.本系列產品油封皆採用進口NBR 90°，符合耐壓條件。



### Characterization：

- 1.Efficiency filtration and large capacity of filtrate.
- 2.Antirust process of housing manufactured.
- 3.Metal mesh media could be cleaned.
- 4.Differential indicators installed each side according to condition.
- 5.This series of products oil seal all adopts and imports NBR 90°，is qualified to able to bear pressing.

#### ▶ 過濾器材質 Materials

過濾器上部 Head	旁通閥 Bypass
鑄鐵 (經熱處理) FCD 45 (Thermal treatment)	銅合金 Brass alloy

過濾器套筒 Cover	油封 Seals
中碳鋼 Steel (Thermal treatment)	Buna-N 90° Viton

#### ▶ 濾蕊潰決壓力 Collapse pressure filter element

N series：20 bar

H series：210 bar

#### ▶ 過濾器壓力 Pressure filter body

最大工作壓力到 250 bar

測試壓力：350 bar

爆破壓力：750 bar

Maximum working pressure up to 250 bar

Test pressure：350 bar

Minimum burst pressure：750 bar

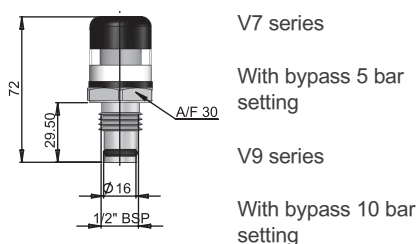
#### ▶ 旁通閥測定壓力 Bypass valve calibration pressure

旁通閥設定壓力

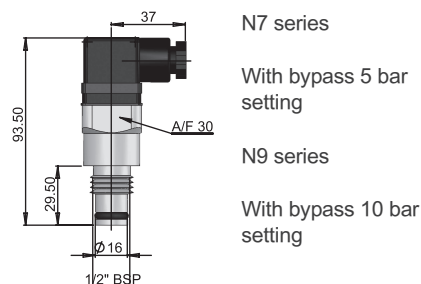
Bapss valve, differential opening pressure

6 bar ± 10%

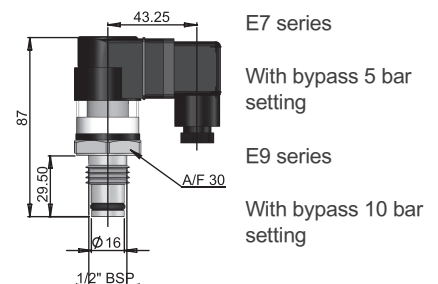
#### 目視 Visual



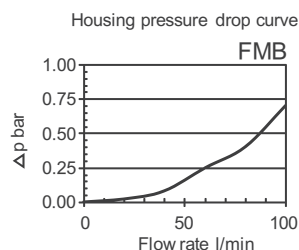
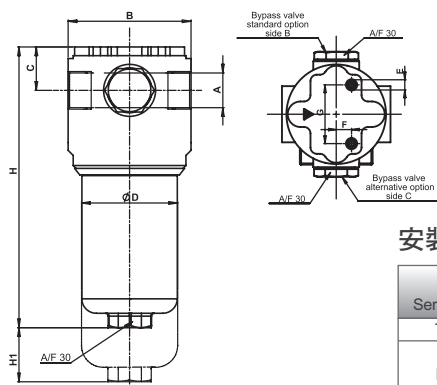
#### 電氣 Electrical



#### 目視-電氣 Visual-electrical



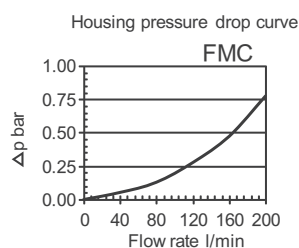
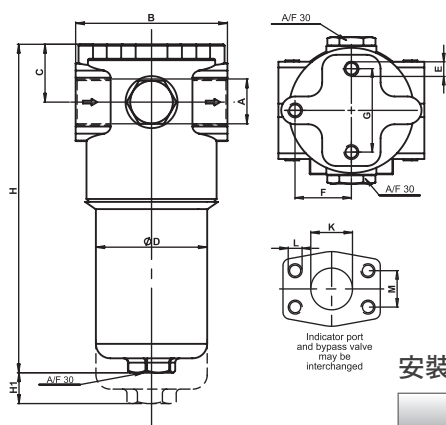
## FMB series



### 安裝尺寸及外型尺寸 Install the size and size of appearance

型式編號 Serial number of the model		A	B	C	φD	E	F	G	H	H1
Type	Model	PT	mm	mm	mm		mm	mm	mm	mm
FMB	1	3/4"PT	85	30	66.5	M8	12	46	165	100
	2								194	150
	3								298	260

## FMC series



### 法蘭連接 Flange connection

Type	Port A	B	C	D	E
F1	1" SAE - 3000 PSI / M	52.4	26.2	M10	M10

### 安裝尺寸及外型尺寸 Install the size and size of appearance

型式編號 Serial number of the model		A	B	C	φD	E	F	G	H	H1
Type	Model	PT	mm	mm	mm		mm	mm	mm	mm
FMC	1	1"PT	105	40	77	M10	40.55	60	225	130
	2								335	280

## 型號說明 Model code

FM	B	1	A10	N		T2
型式 / Type	型式 / Type	型式 / Type	濾蕊規格	濾蕊潰決壓力		污染指示器 / Condition indicator
B	B C	B C	Filter element	Collapse pressure series		S 螺紋孔 / With threaded hole only
C	1 1	2 2		N : 20 bar		T2 T2塞頭 / With plug
	2 2	3 -		H : 210 bar		V7 目視 / Visual 5bar
	3 -					V9 目視 / Visual 10bar
			金屬網	玻璃纖維		E7 目視電氣 / Visual-electrical 5bar
			Metal	Inorganic microfibre		E9 目視電氣 / Visual-electrical 10bar
			M10	A03		N7 電氣 / Electrical 5bar
			M25	A06		N9 電氣 / Electrical 10bar
			M60	A10		BP 旁通閥 / Bypass 6 bar ± 10%
			M90	A25		
			M250			

申記企業有限公司

TAIWAN SCHEMIK CORP.

11259 台北市北投區立德路121巷5號

NO.5.Lane 121, Lide Rd Beitou District 11259, Taipei, Taiwan

TEL : +886-2-2894-0500 FAX : +886-2-2894-0554

http://www.schemik.com